



PREMIUMHR
PROFESSIONAL HR PARTNER

Empowering the Future

**Global Premium School Services
Powered by Fundamentor**



Fundamentor™

Global Premium Services

Vision for Schools

To create haven for future leaders, inventors, industrialists,
creators and responsible citizens of the world



Positive Parenting and Schooling Module

Discovery Phase

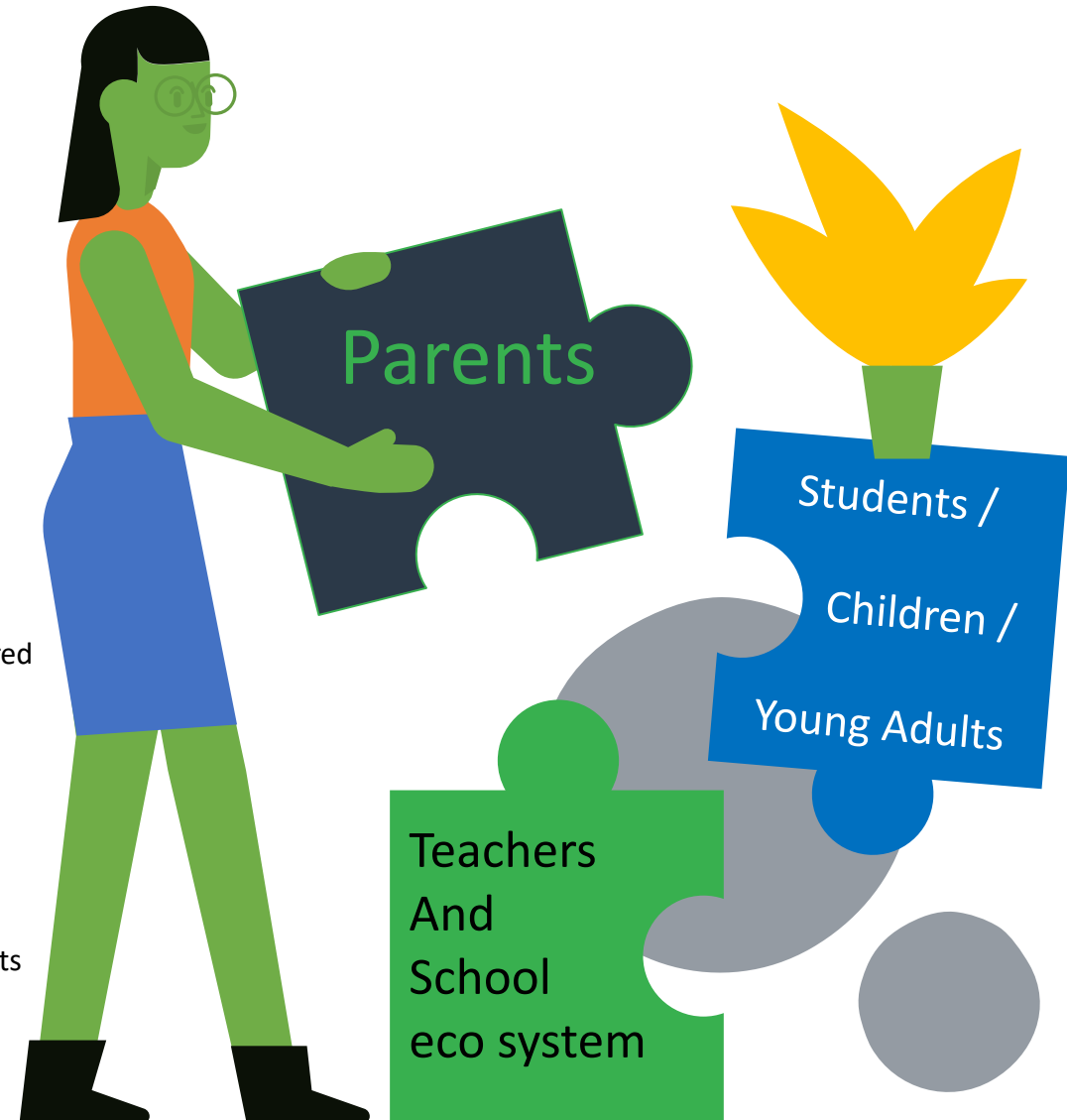
- Understand concerns by interacting with all stake holders
- Conduct surveys with all the actors
- Conduct non-academic audit for the School for process re-engineering if required

Diagnostic Phase

- Brainstorm concerns with School Management to filter the key issues
- Consider any other matter which may impact Parents' experience
- Analyze results of the inputs from the Discovery phase

Direction Phase

- Co-Create Interventions that support the value alignment with the best interests of the student at core
- Collaborate with Teachers and Parents and conduct discovery and learning sessions to enhance the overall engagement
- Conduct a dip stick survey to measure results



Objectives of the GPS Positive Parenting and Schooling Module

To reaffirm children's rights to education, safety, holistic social and emotional wellbeing

To strengthen relationships with parents

To make parents and teachers partners in child's growth

Address barriers to involvement in schools by parents and actively redesign engagement models

Make better programs, opportunities and learning for students through synergic collaboration between Teachers and Parents

Give parents appropriate opportunities to contribute to school

Get the uninvolved Parents involved and already involved Parents effective contributors



Contacts Us for More Information

Randhir Mazumdar

randhir@globalpremiumhrm.com

+974 7004 2007

[linkedin.com/in/randhir-mazumdar-7b07838](https://www.linkedin.com/in/randhir-mazumdar-7b07838)

Baishali Mukherji

baishali@fundamentor.com

+971 50 113 6233

[linkedin.com/in/baishalimukherji](https://www.linkedin.com/in/baishalimukherji)

Lt Col (Dr) Delin Mathew

[linkedin.com/in/lit-col-dr-delin-mathew-4418158](https://www.linkedin.com/in/lit-col-dr-delin-mathew-4418158)